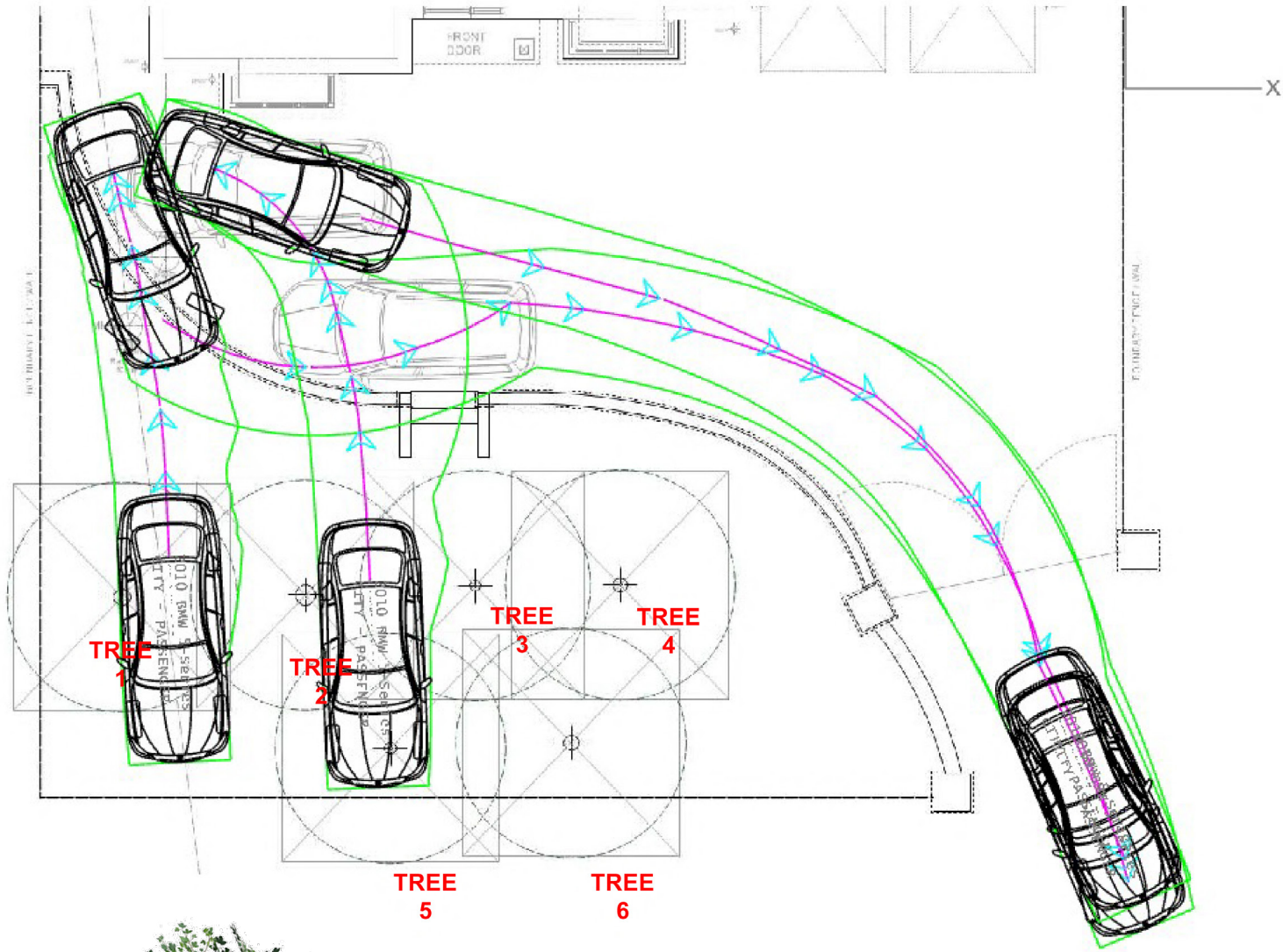


‘Garage Conversion +’

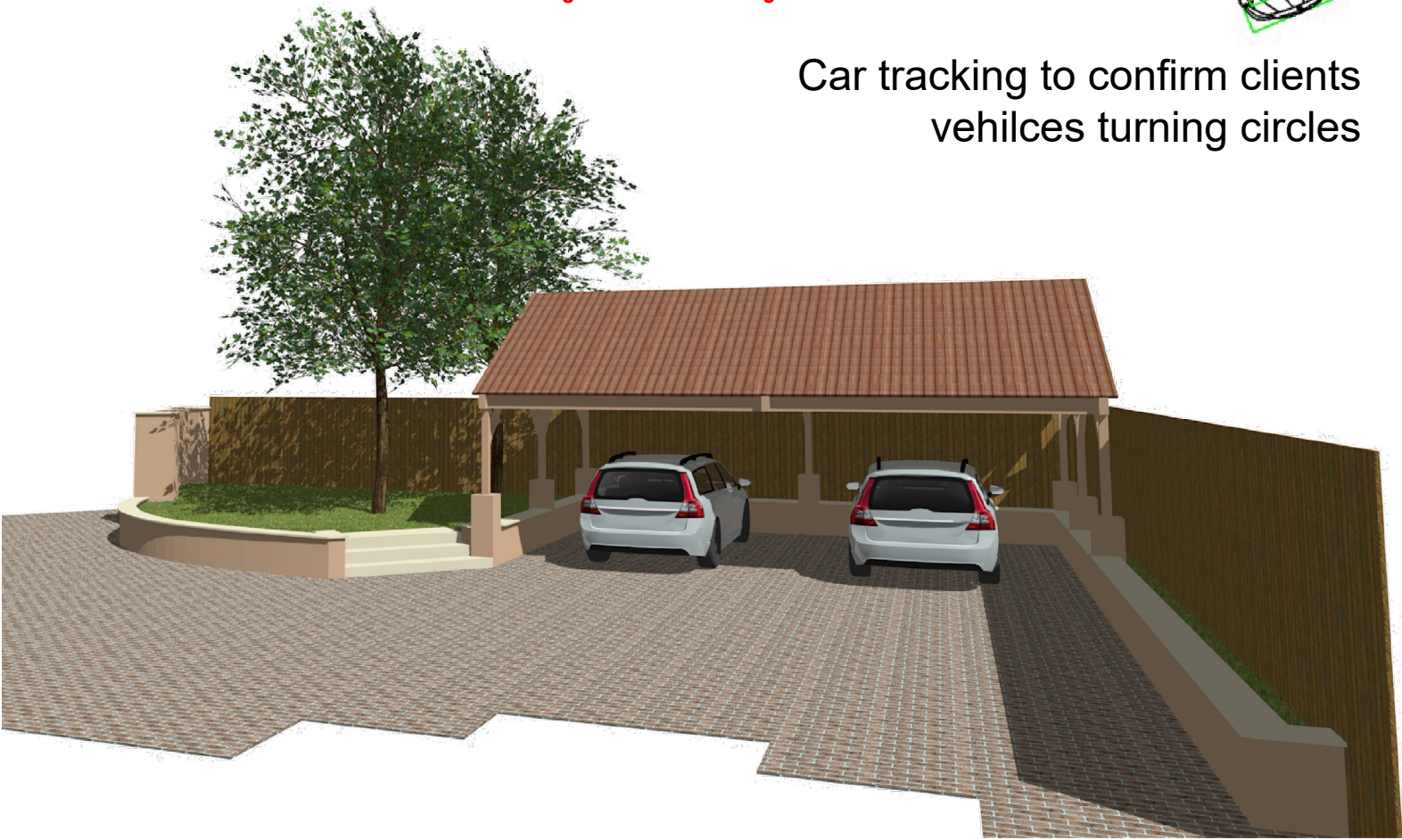
Residential property - Internal structural alterations to form new Day Room / convert double garage to ground floor bedroom & ensuite / landscape alterations to create double carport - Householder Planning Approval



Ground floor bedrooms & en-suites in multi-generational households is becoming increasingly prevalent and the starting point for this clients brief. The conversion of the integral double garage, encouraged the client to front garden and drive, to accommodate a new double car parking space.



Car tracking to confirm clients vehilces turning circles



Additional internal alterations were designed in to include the remodeling of the kitchen-dining arrangement to form a 9.7x 3.7m Day Room kitchen with full width bifolds onto the rear patio and seperate Larder