

TECHNICAL DRAWING PACKAGE EXTRACTS

Visual
Ceiling raft layout, construction and co-ordination with existing services
Construction layout & Services Co-ord Rafts 1&2



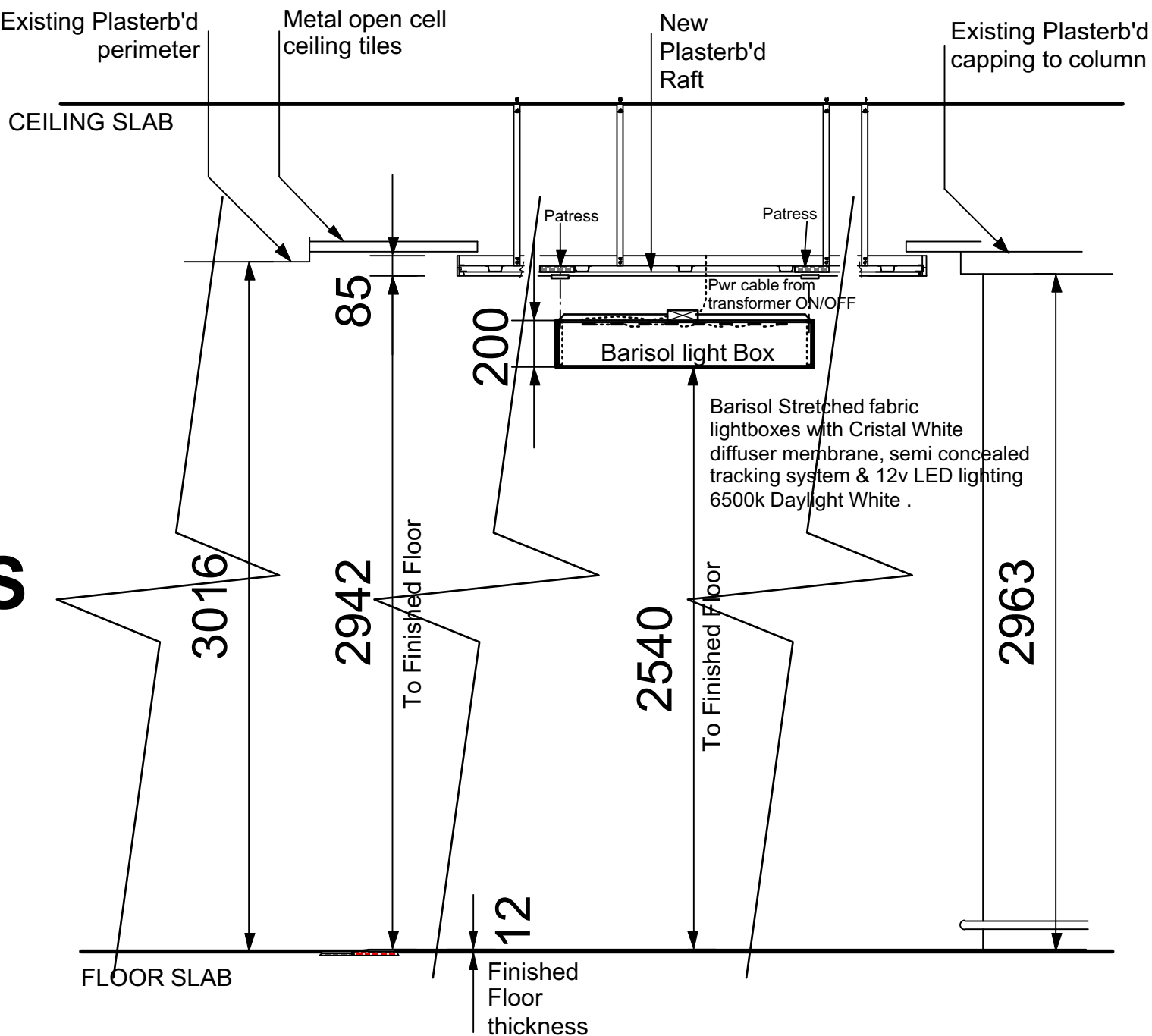
The Bloomberg Media Hub (Lounge) within departures at London City Airport

Original creative design provided by Imagination (London) with subsequent visualisation and development drawings for approvals and construction produced by Steve Turner on behalf of A.A.Lovegroves (Main Contractor)



TECHNICAL
DRAWING PACKAGE EXTRACTS

- # Visual
- # Ceiling raft layout, construction and co-ordination with existing services
- # Construction layout & Services Co-ord Rafts 1&2



FINISHED HEIGHTS
SECTION A-A @1-25
TO BE READ WITH DRG'S
0186-16&17 RAFT LAYOUTS

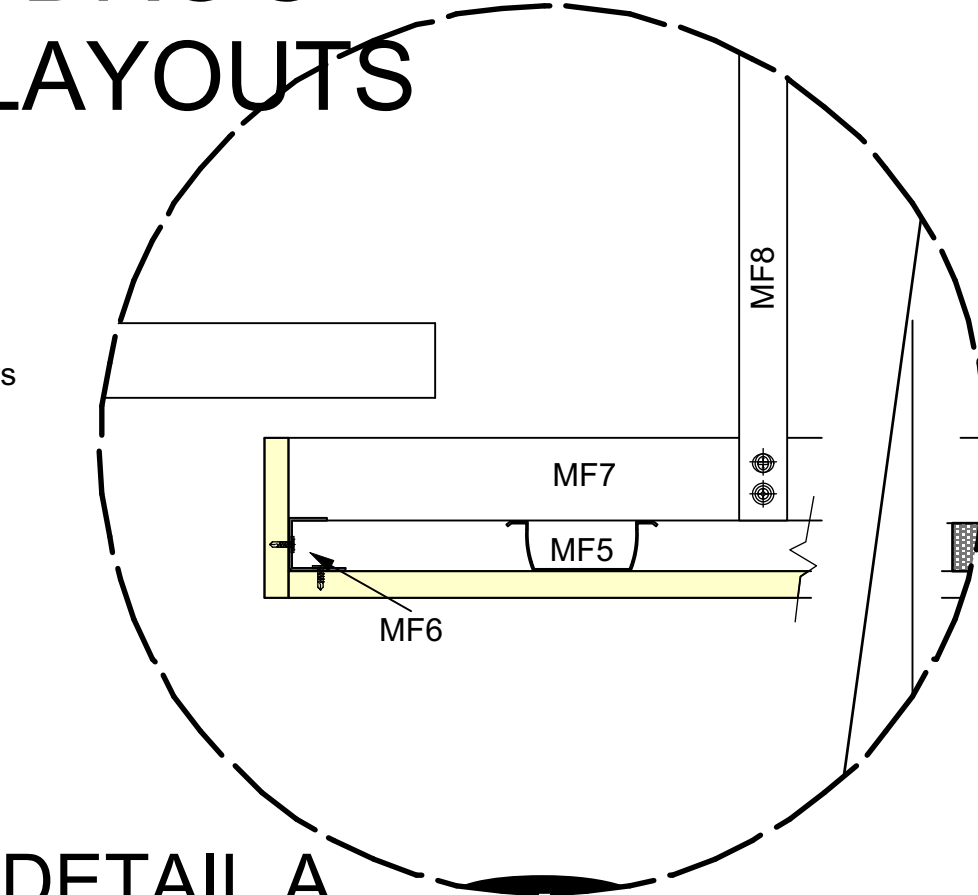
CasoLine MF
1 Layer Gyproc plasterboard fixed with British Gypsum Drywall Screws @ 230mm ctrs in field of board & 150mm ctrs at board ends.

Gyproframe MF5 ceiling Sections at max 450ctrts fixed to each MF7 with 2No British Gypsum Wafer Head Jack-Point Screws or MF9 Connecting Clips

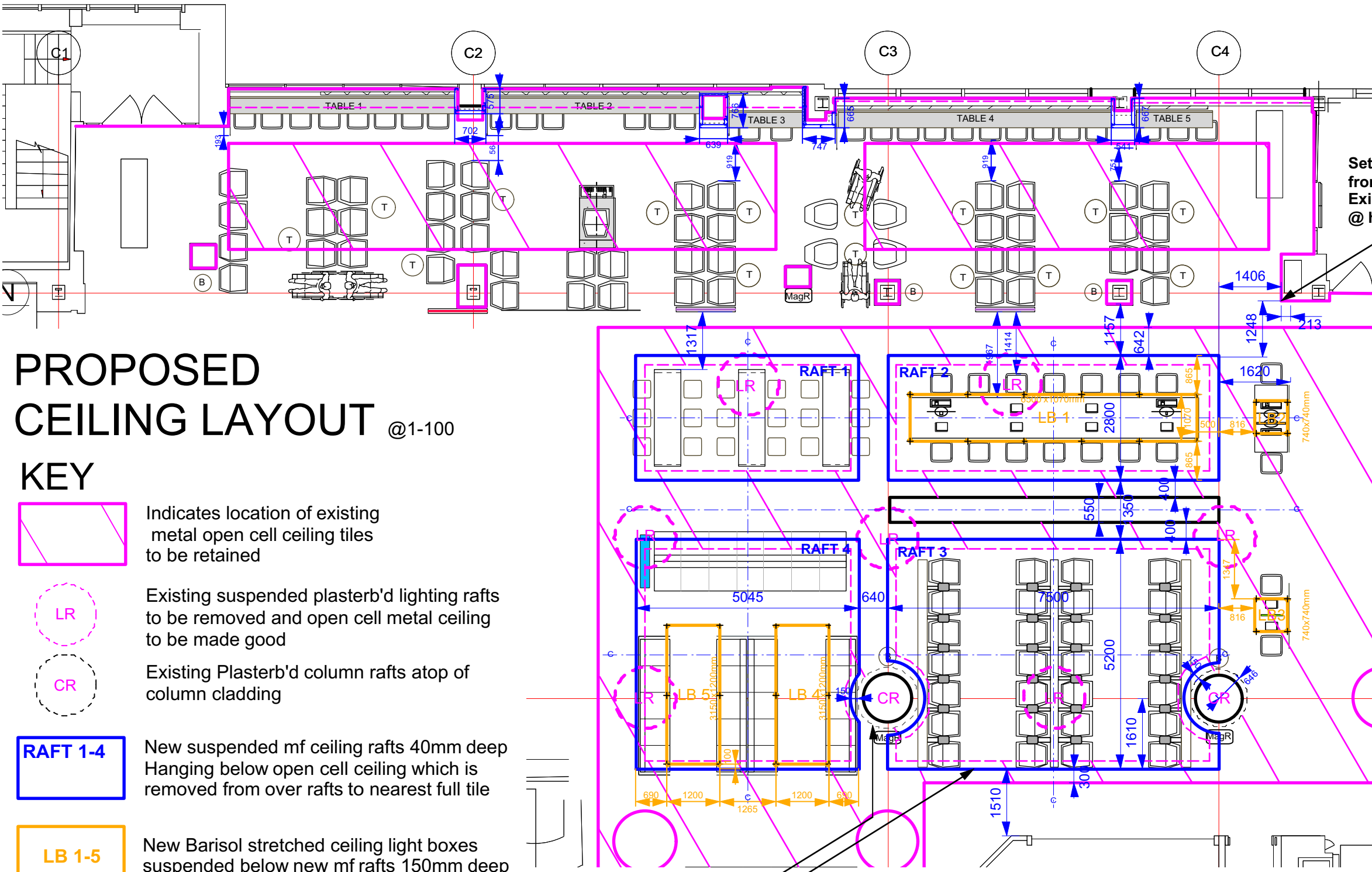
Gyproframe MF6 Perimeter Channel suitably fixed to 1 layer of Gyproc plasterboard upstand

Gyproframe MF7 primary support channels @ 1200mm ctrs.

Gyproframe MF8 strap hanger @ 1200mm ctrs fixed to MF7 with 2 No British Gypsum Wafer Head Jack-Point Screws. Gyproframe MF12 Soffit Cleat fixed to hanger with MF11 Nut & Bolt & suitably fixed to ceiling slab.



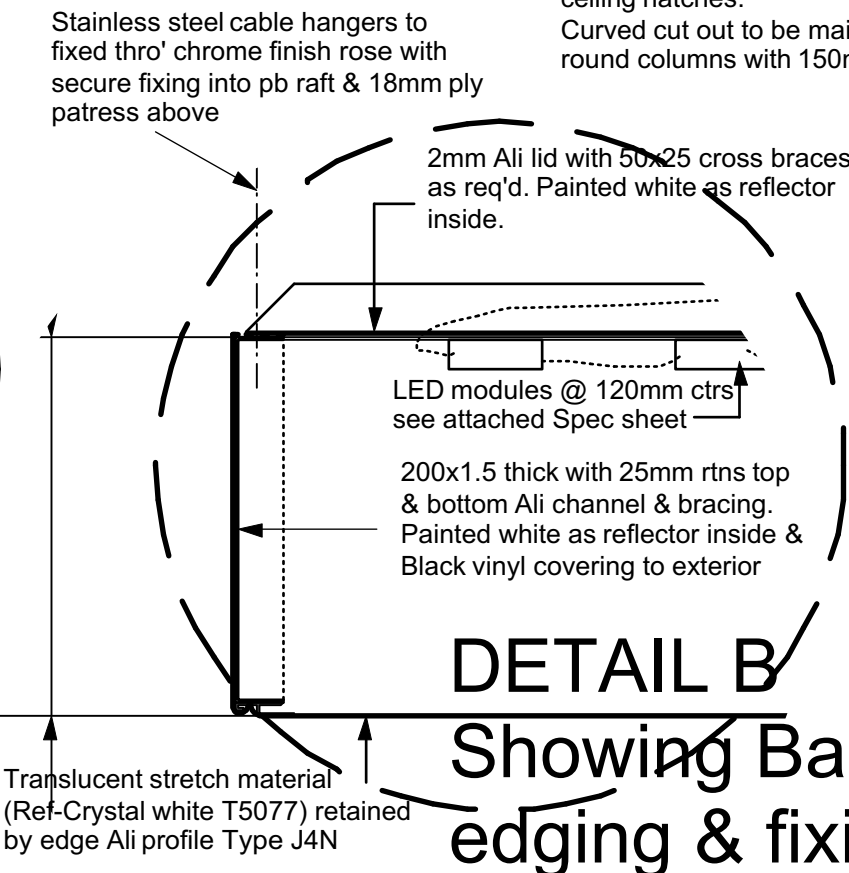
DETAIL A
Showing Raft edging & fixing @1-4



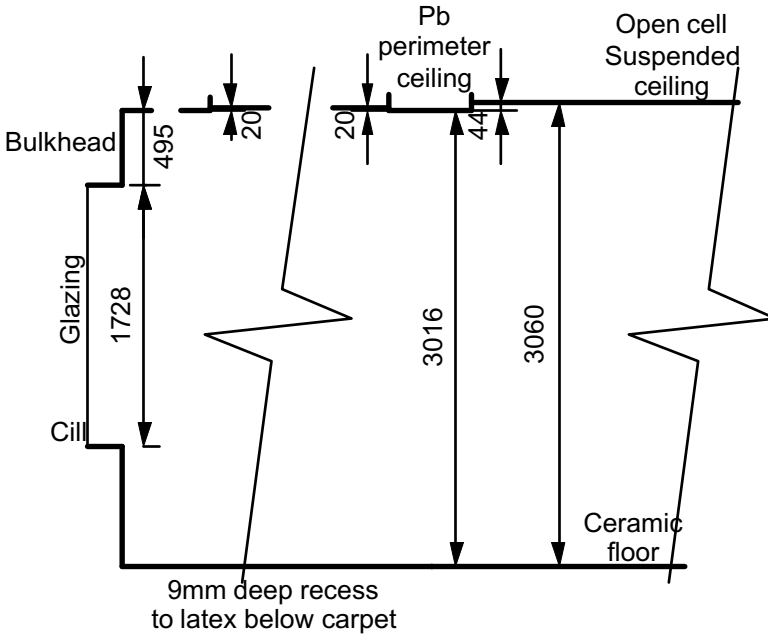
PROPOSED
CEILING LAYOUT @1-100

- KEY**
- Indicates location of existing metal open cell ceiling tiles to be retained
 - Existing suspended plasterb'd lighting rafts to be removed and open cell metal ceiling to be made good
 - Existing Plasterb'd column rafts atop of column cladding
 - New suspended mf ceiling rafts 40mm deep Hanging below open cell ceiling which is removed from over rafts to nearest full tile
 - New Barisol stretched ceiling light boxes suspended below new mf rafts 150mm deep

Open Cell ceiling above rafts 1,2,3,4 to be removed to nearest full tile over-lap to allow for maintenance via new 600x600mm ceiling hatches. Curved cut out to be maintained around round columns with 150mm gap.



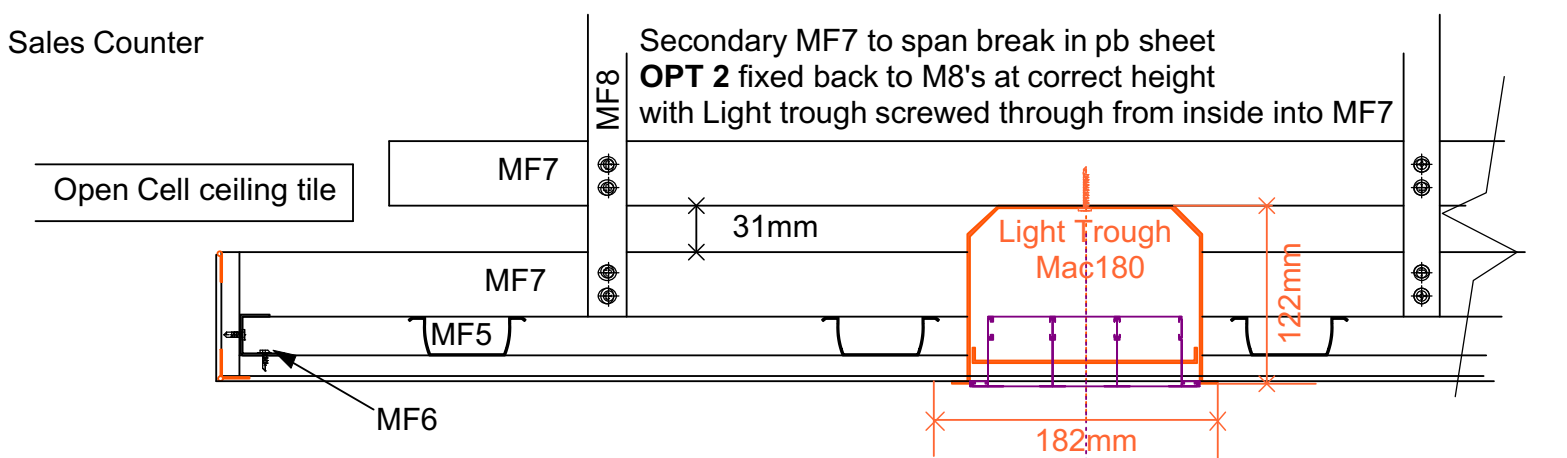
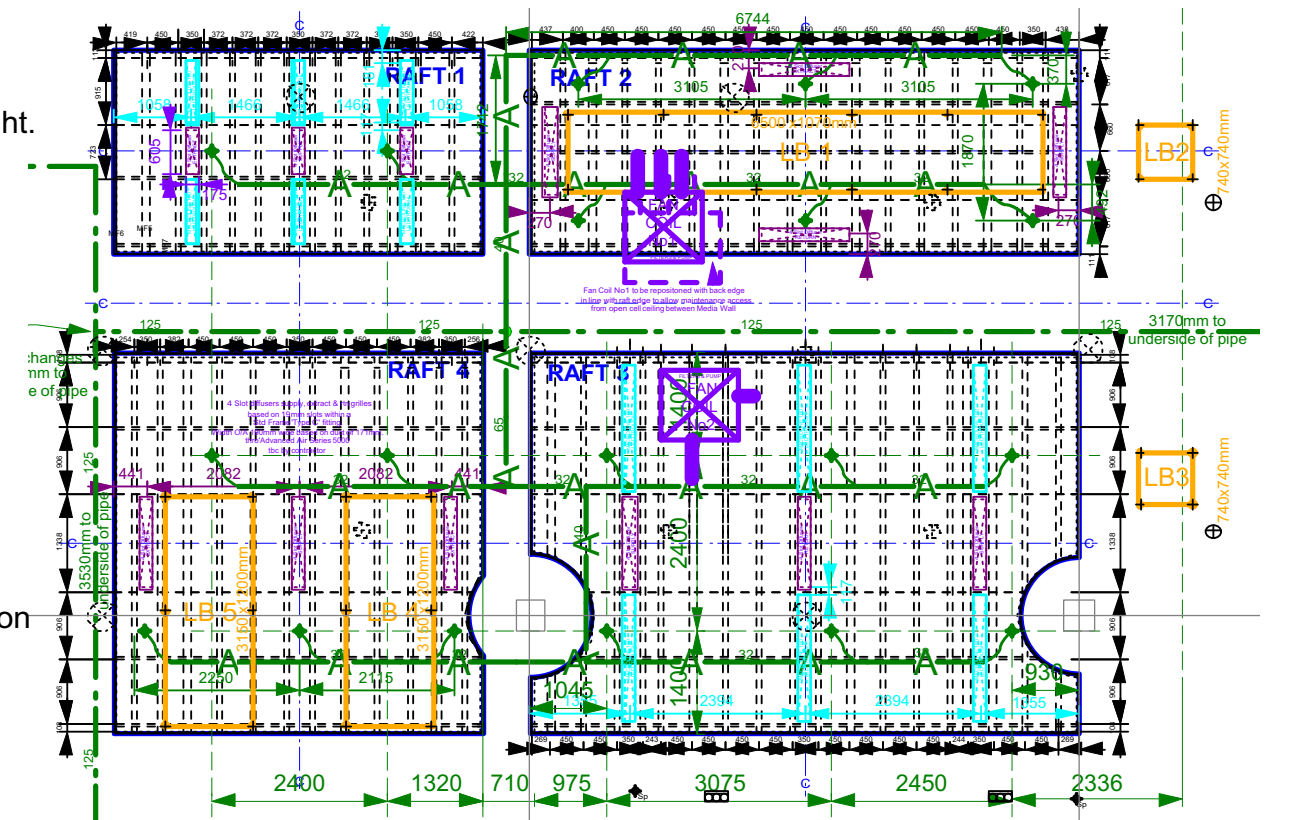
DETAIL B
Showing Barisol edging & fixing @1-4



SURVEY OF
EXISTING HEIGHTS
SECTION B-B @1-50

| | | | | | | | | | | |
|-----------|---|--------|--------------------------|-------------|-------------------------------|----|-------------|------------------|----|---|
| PROJECT | Bloomberg Passenger Media Lounge (Departures 1st Flr) London City Airport | DRG No | 0186-11 AS BUILT | ALTERATIONS | | BY | ALTERATIONS | | BY | <div>steveturner DESIGN</div> <div>8,POND STREET,HARLAXTON,LINCS. NG32 1HW TEL:07765-023309 info@steveturnerdesigns.co.uk</div> <div>A.A. Lovegroves Ltd Principle Contractor 37 Tinsley Lane, Crawley West Sussex, RH10 -8AJ</div> |
| | | SCALE | 1-100 / 50 / 25 / 4 @ A2 | REV | DATE DESCRIPTION | | REV | DATE DESCRIPTION | | |
| DRG TITLE | AS BUILT General Ceiling Layout & RAFT POSITIONING | DATE | 04-03-14 | A | 17-3-14 | | | | | |
| | | DWN BY | | AB | 13-5-14 Up date GA / AS BUILT | | | | | |
| | | | | | | | | | | |

Visual
Ceiling raft layout, construction and co-ordination with existing services
Construction layout & Services Co-ord Rafts 1&2



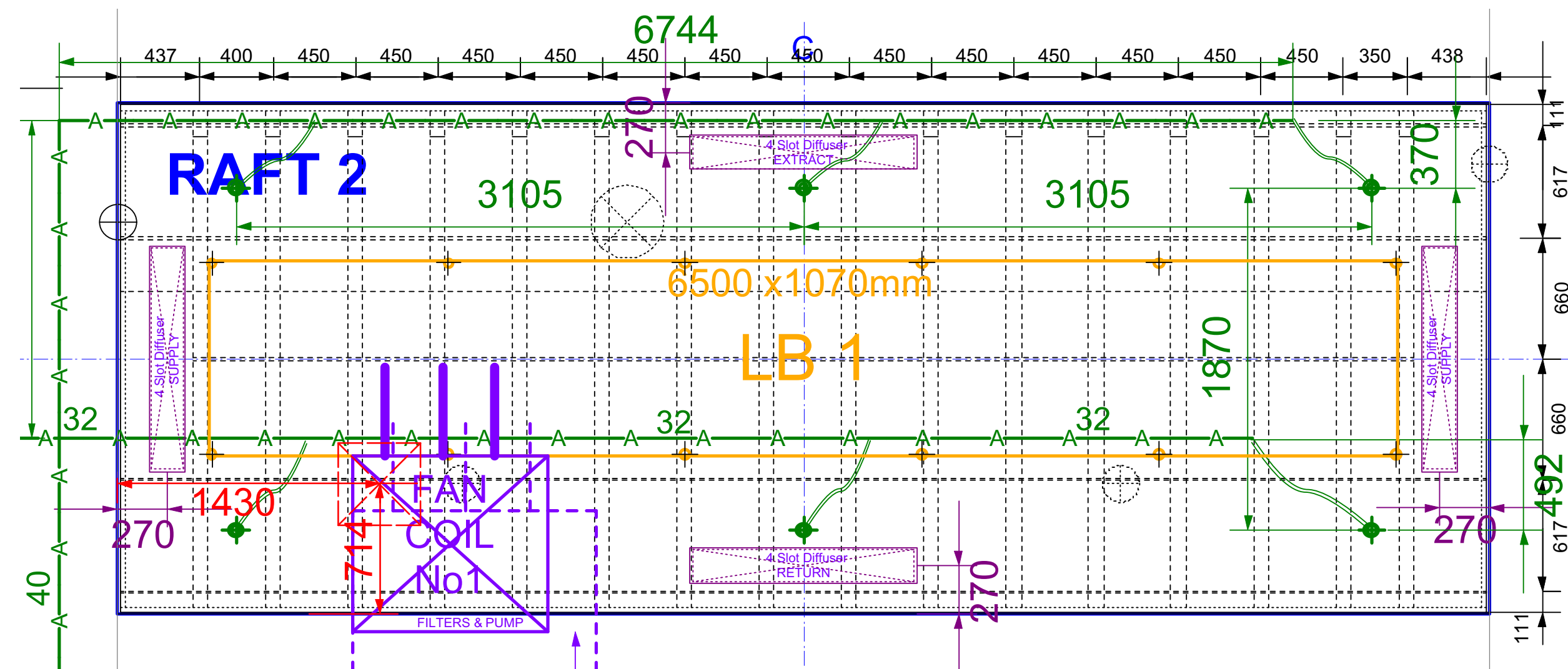
CasoLine MF
1 Layer Gyproc plasterboard fixed with British Gypsum
Drywall Screws @ 230mm ctrs in field of board & 150mm
ctrs at board ends.


Gypframe MF5 ceiling Sections at max 450ctrs fixed to each MF7 with 2No British Gypsum Wafer Head Jack-Point Screws or MF9 Connecting Clips

Gypframe MF6 Perimeter Channel suitably fixed to 1 layer of Gyproc plasterboard upstand

Gypframe MF7 primary support channels @ 1200mm ctrs.

Gypframe MF8 strap hanger @ 1200mm ctrs fixed to MF7 with 2 No British Gypsum Wafer Head Jack-Point Screws. Gypframe MF12 Soffit Cleat fixed to hanger with MF11 Nut & Bolt & suitably fixed to ceiling slab.



| | | | | | | | | | | | |
|-----------|---|-------------------------|-------------|------|-------------|--|-------------|------|-------------|----|---|
| PROJECT | Bloomberg Passenger Media Lounge (Departures 1st Flr) London City Airport | DRG No 0186-16 AS BUILT | ALTERATIONS | | | | ALTERATIONS | | | | CLIENT |
| | SCALE | 1-5 /25/100 @ A2 | REV | DATE | DESCRIPTION | BY | REV | DATE | DESCRIPTION | BY | |
| DRG TITLE | AS BUILT CONSTRUCTION LAYOUT & SERVICES CO-ORDINATION RAFTS 1&2 | DATE | 12-03-14 | AB | 13-5-14 | Add in Access hatches / update GA / AS BUILT | | | | | 8.POND STREET, HARLAXTON, Lincs. NG32 1HW TEL 07765-023069 info@steveturnerdesigns.co.uk  |
| | | DWN BY | | | | | | | | | |

steveturner
DESIGN

8.POND STREET, HARLAXTON, Lincs. NG32 1HW
TEL 07765-023069
info@steveturnerdesigns.co.uk

A.A. Lovegroves Ltd

Principle Contractor
37 Tinsley Lane, Crawley
West Sussex, RH10 -8A

THIS DRAWING IS THE PROPERTY OF steveturnerDESIGN AND MAYNOT BE REPRODUCED IN WHOLE OR IN PART WITHOUT PRIOR WRITTEN CONSENT. THIS DRAWING IS NOT TO BE SCALED. ALL DIMENSIONS ARE TO BE CHECKED ON SITE BY CONTRACTORS